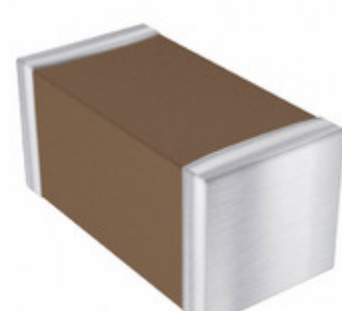


|                       |   |
|-----------------------|---|
| <b>LD06CA471JAB1A</b> |   |
| Part Number           | <a href="#">LD06CA471JAB1A</a>  |
| Manufacturer          | <a href="#">AVX Corporation</a>   |
| Description           | CAP CER 470PF 630V NP0 1206   |
| Quantity Available    | 500 pcs in stock  |
| Datasheets            |   |
| LD06CA471JAB1A Price  | <a href="#">Request Price &amp; Lead Time Online</a><br>or Email us: <a href="mailto:Info@ariat-tech.com">Info@ariat-tech.com</a> |


[GET A QUOTE](#)

| Technical Information of LD06CA471JAB1A |                                 |                         |                                       |
|---|---------------------------------|-------------------------|---------------------------------------|
| Manufacturer Part Number                | <a href="#">LD06CA471JAB1A</a>  | Category                | <a href="#">Capacitors</a>            |
| Manufacturer                            | <a href="#">AVX Corporation</a> | Description             | CAP CER 470PF 630V NP0 1206           |
| Package / Case                          | Tape & Reel (TR)                | Quantity Available      | 500                                   |
| Series                                  | LD                              | Voltage - Rated         | 630V                                  |
| Operating Temperature                   | -55°C ~ 125°C                   | Ratings                 | -                                     |
| Mounting Type                           | Surface Mount, MLCC             | Size / Dimension        | 0.126" L x 0.063" W (3.20mm x 1.60mm) |
| Height - Seated (Max)                   | -                               | Features                | High Voltage                          |
| Capacitance                             | 470pF                           | Tolerance               | ±5%                                   |
| Applications                            | General Purpose                 | Lead Spacing            | -                                     |
| Package / Case                          | 1206 (3216 Metric)              | Temperature Coefficient | C0G, NP0                              |
| Thickness (Max)                         | 0.060" (1.52mm)                 | Lead Style              | -                                     |
| Packaging                               | Tape & Reel (TR)                |                         |                                       |

LD06CA471JAB1A 500pcs New and Original in Stock, Find LD06CA471JAB1A Stock, Datasheet, PDF, Inventory at Ariat-Tech.com Online, Order LD06CA471JAB1A AVX Corporation with warrantied and confidence. RFQ LD06CA471JAB1A : [Info@Ariat-Tech.com](mailto:Info@Ariat-Tech.com)

| Related parts for LD06CA471JAB1A |                                |                               |                 |         |
|----------------------------------|--------------------------------|-------------------------------|-----------------|---------|
| Image                            | Part Number                    | Description                   | Manufacturer    | Qty     |
|                                  | <a href="#">LD06CC153KAB1A</a> | CAP CER 0.015UF 630V X7R 1206 | AVX Corporation | 500 pcs |
|                                  | <a href="#">LD06AC682KAB1A</a> | CAP CER 6800PF 1KV X7R 1206   | AVX Corporation | 500 pcs |
|                                  | <a href="#">LD06GA100JAB1A</a> | CAP CER 10PF 2KV NP0 1206     | AVX Corporation | 500 pcs |
|                                  | <a href="#">LD06AC102KAB1A</a> | CAP CER 1000PF 1KV X7R 1206   | AVX Corporation | 500 pcs |
|                                  | <a href="#">LD06CC220KAB1A</a> | CAP CER 22PF 630V X7R 1206    | AVX Corporation | 500 pcs |
|                                  | <a href="#">LD06CC472KAB1A</a> | CAP CER 4700PF 630V X7R 1206  | AVX Corporation | 500 pcs |
|                                  | <a href="#">LD06AC182KAB1A</a> | CAP CER 1800PF 1KV X7R 1206   | AVX Corporation | 500 pcs |
|                                  | <a href="#">LD06CC562MAB1A</a> | CAP CER 5600PF 630V X7R 1206  | AVX Corporation | 500 pcs |
|                                  | <a href="#">LD06CA220KAB1A</a> | CAP CER 22PF 630V NP0 1206    | AVX Corporation | 500 pcs |
|                                  | <a href="#">LD06AC101KAB1A</a> | CAP CER 100PF 1KV X7R 1206    | AVX Corporation | 500 pcs |
|                                  | <a href="#">LD06AC220KAB1A</a> | CAP CER 22PF 1KV X7R 1206     | AVX Corporation | 500 pcs |
|                                  | <a href="#">LD06CA271JAB1A</a> | CAP CER 270PF 630V NP0 1206   | AVX Corporation | 500 pcs |
|                                  | <a href="#">LD06AC472KAB1A</a> | CAP CER 4700PF 1KV X7R 1206   | AVX Corporation | 500 pcs |
|                                  | <a href="#">LD06CC103KAB1A</a> | CAP CER 10000PF 630V X7R 1206 | AVX Corporation | 500 pcs |
|                                  | <a href="#">LD06AC562KAB1A</a> | CAP CER 5600PF 1KV X7R 1206   | AVX Corporation | 500 pcs |
|                                  | <a href="#">LD06CC102KAB1A</a> | CAP CER 1000PF 630V X7R 1206  | AVX Corporation | 500 pcs |
|                                  | <a href="#">LD06CC101KAB1A</a> | CAP CER 100PF 630V X7R 1206   | AVX Corporation | 500 pcs |
|                                  | <a href="#">LD06GA220KAB1A</a> | CAP CER 22PF 2KV NP0 1206     | AVX Corporation | 500 pcs |
|                                  | <a href="#">LD06AC562MAB1A</a> | CAP CER 5600PF 1KV X7R 1206   | AVX Corporation | 500 pcs |
|                                  | <a href="#">LD06CC562KAB1A</a> | CAP CER 5600PF 630V X7R 1206  | AVX Corporation | 500 pcs |

**IC Chips & IGBT Module - Hot Stock Part Number**

|                                |                                |                                |                                |                                |
|--------------------------------|--------------------------------|--------------------------------|--------------------------------|--------------------------------|
| <a href="#">LD065C473KAB2A</a> | <a href="#">LD065C474KAB2A</a> | <a href="#">LD065C562JAB2A</a> | <a href="#">LD065C563KAB2A</a> | <a href="#">LD065C682JAB2A</a> |
| <a href="#">LD065C682KAB2A</a> | <a href="#">LD065C683KAB2A</a> | <a href="#">LD066D106KAB2A</a> | <a href="#">LD066D226MAB2A</a> | <a href="#">LD067C103KAB2A</a> |
| <a href="#">LD06AA100JAB1A</a> | <a href="#">LD06AA151JAB1A</a> | <a href="#">LD06AA220KAB1A</a> | <a href="#">LD06AA470KAB1A</a> | <a href="#">LD06AA471JAB1A</a> |
| <a href="#">LD06AC101KAB1A</a> | <a href="#">LD06AC102KAB1A</a> | <a href="#">LD06AC182KAB1A</a> | <a href="#">LD06AC220KAB1A</a> | <a href="#">LD06AC472KAB1A</a> |
| <a href="#">LD06AC562KAB1A</a> | <a href="#">LD06AC562MAB1A</a> | <a href="#">LD06AC682KAB1A</a> | <a href="#">LD06CA220KAB1A</a> | <a href="#">LD06CA271JAB1A</a> |
| <a href="#">LD06CC101KAB1A</a> | <a href="#">LD06CC102KAB1A</a> | <a href="#">LD06CC103KAB1A</a> | <a href="#">LD06CC153KAB1A</a> | <a href="#">LD06CC220KAB1A</a> |
| <a href="#">LD06CC472KAB1A</a> | <a href="#">LD06CC562KAB1A</a> | <a href="#">LD06CC562MAB1A</a> | <a href="#">LD06GA100JAB1A</a> | <a href="#">LD06GA220KAB1A</a> |
| <a href="#">LD06GA470KAB1A</a> | <a href="#">LD06GC101KAB1A</a> | <a href="#">LD06GC102KAB1A</a> | <a href="#">LD06GC152KAB1A</a> | <a href="#">LD06GC220KAB1A</a> |
| <a href="#">LD06PC472KAB1A</a> | <a href="#">LD06SC101KAB1A</a> | <a href="#">LD06SC102KAB1A</a> | <a href="#">LD06YC102MAB2A</a> | <a href="#">LD06YC103KAB2A</a> |
| <a href="#">LD06YC104KAB2A</a> | <a href="#">LD06YC105JAB2A</a> | <a href="#">LD06YC105KAB2A</a> | <a href="#">LD06YC105MAB2A</a> | <a href="#">LD06YC184JAB2A</a> |